

HIGH ANGLE LIFT SOLUTION CASE STUDY

Field: Drumheller

Formation: Basal Colorado

Install Date: February 2017

Pre-Install Pump Eff.: 25%

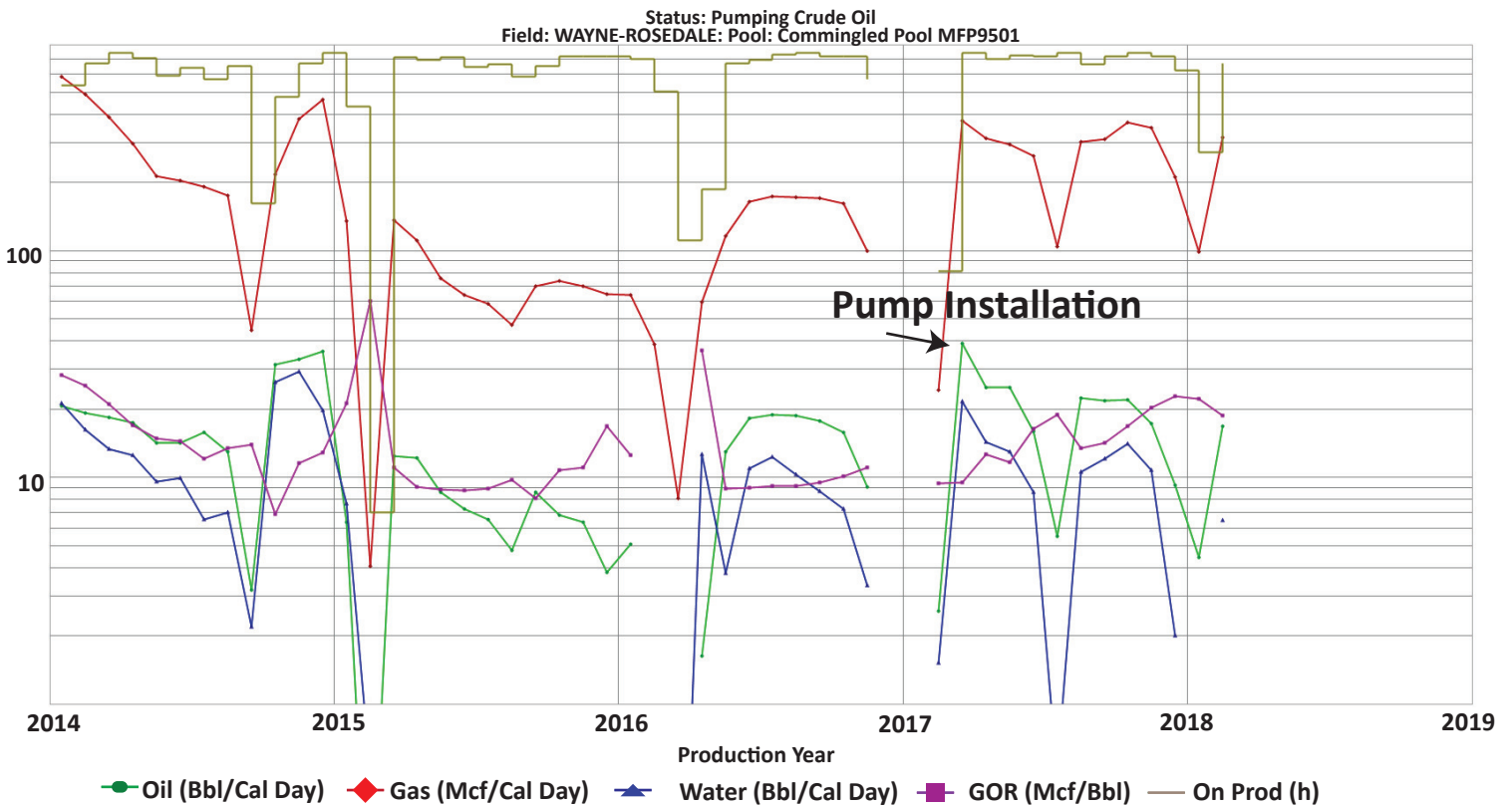
Post-Install Pump Eff.: 70%

Pump Type: High Angle Reciprocating Pump [™]

Pump Land Angle: 86°

Results

- Accelerated production
- Increased pump efficiency
- No gas-locking with an elevated GLR (26,000Scf/Bbl)



References from client available upon request

Contacts

Raise Production Inc.
2620, 58th Avenue SE
Calgary, AB T2C 1G5



Phone: 403-669-7675
Fax: 403-699-0085
Email: sales@raiseproduction.com
Website: www.raiseproduction.com