



Raise Production Inc.

# Annual General Meeting

November 21<sup>st</sup> 2019

# Forward-looking Information and Statements

*This written and accompanying oral presentation is being supplied to you solely for your information and may not be reproduced or forwarded to any other person, or published (in whole or in part) for any other purpose.*

*This written and accompanying oral presentation contains certain forward-looking statements which are provided for the purpose of presenting information about management's current expectations and plans. Readers are cautioned that such statements may not be appropriate for other purposes. Forward-looking statements include statements that are predicative in nature, depend upon or refer to future events or conditions, or include words such as "expects", "anticipates", "plans", "believes", "estimates", "intends", "targets", "projects", "forecasts" or negative versions thereof and other similar expressions, or future or conditional verbs such as "may", "will", "should", "would" and "could". These statements may include, without limitation, statements regarding future cash flows, the development, manufacturing, functioning, effectiveness and commerciality of products under development, plans for raising capital, and the operations, business, financial condition, priorities, ongoing objectives, strategies and outlook of Raise Production. This information is based upon certain material factors or assumptions that were applied in developing the forward-looking statements, including the design specifications of products under development, management's current plans, its perception of historical trends, current conditions and expected future developments, as well as other factors that are believed to be appropriate in the circumstances.*

*Although these forward-looking statements are based upon management's current reasonable expectations and assumptions, they are subject to numerous risks and uncertainties. Some of the factors that could cause results or events to differ from current expectations include, but are not limited to, product development risks, risks associated with customer adoption of Raise products, counterparty risks and operational risks. We caution that the foregoing list of factors that may affect future results is not exhaustive. Raise Production's actual results could differ materially from those expressed in, or implied by, these forward-looking statements and, accordingly, no assurances can be given that any of the events anticipated by the forward-looking statements will transpire or occur. The forward-looking statements contained in this presentation are based on assumptions that were considered reasonable at the time of delivery.*

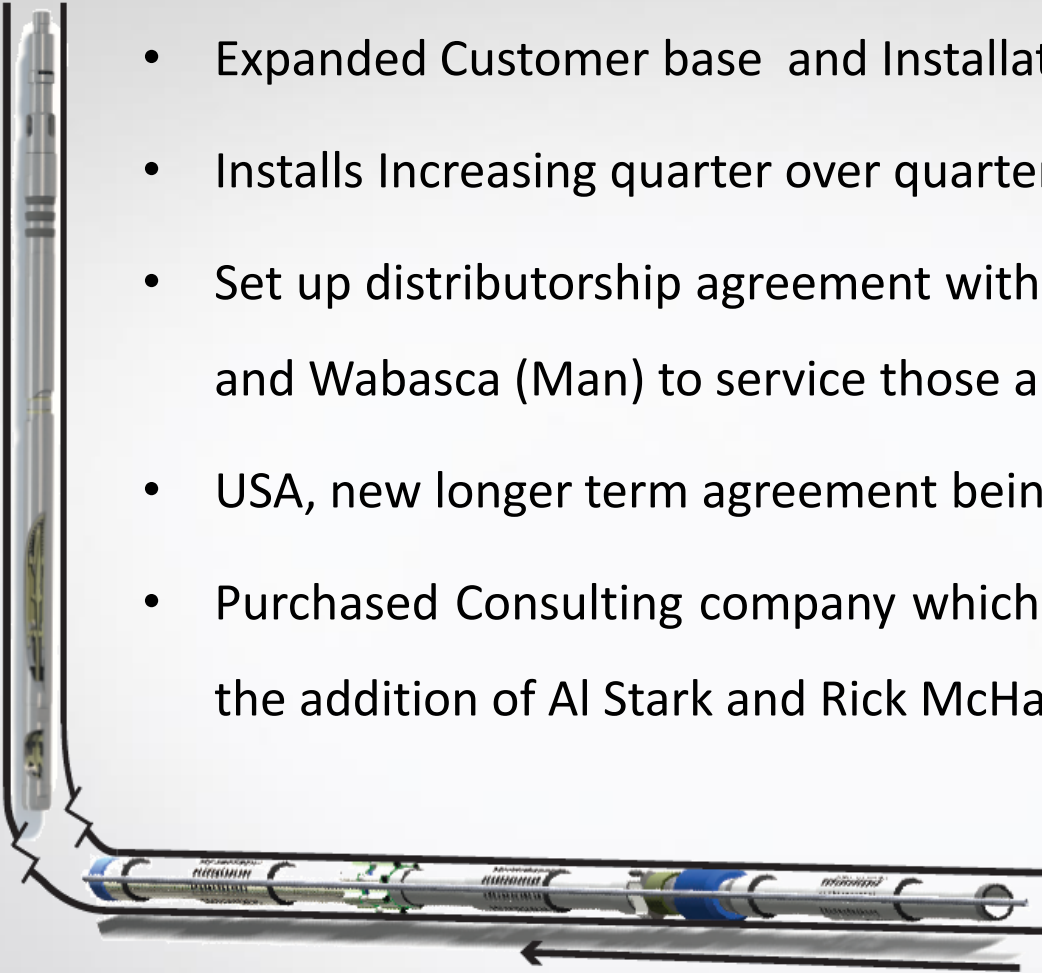
*The forward-looking statements contained in this presentation are stated as of the date of this presentation. The forward-looking information contained in this presentation is expressly qualified by this cautionary statement. Other than as specifically required by law, Raise Production undertakes no obligation to update any forward-looking statements to reflect events or circumstances after such date or to reflect the occurrence of unanticipated events, whether as a result of new information, future events or results, or otherwise.*

*Certain information contained herein has been prepared by third-party sources, and such information has not been independently audited or verified by Raise Production. Raise Production has used its best efforts to ensure the accuracy and completeness of the information presented.*

*US Securities Matters: The securities have not been registered under the United States Securities Act of 1933, as amended (the "U.S. Securities Act"), and may not be offered or sold in the United States or to U.S. persons unless the securities are registered under the U.S. Securities Act, or an exemption from the registration requirements to the U.S. Securities Act is available. This presentation shall not constitute an offer to sell of the solicitation of an offer to buy any securities, nor shall there be any sale of securities in any states in the United States in which such offer, solicitation or sale would be unlawful. The term "United States" is defined in Rule 902 of Regulation S under the U.S. Securities Act.*

*General Risk: This presentation does not constitute, and may not be used for or in connection with, an offer to sell or solicitation of an offer to buy by anyone in any jurisdiction in which such offer or solicitation is not authorized or to any person to whom it is unlawful to make such offer or solicitation. No securities commission or similar regulatory authority has passed (or will pass) on the merits of any securities which may be offered nor has it reviewed the presentation and any representation to the contrary is an offence.*

- Expanded Customer base and Installations Generation 2 HARP In Canadian market
- Installs Increasing quarter over quarter Q1 =5, Q2=4, Q3=14, Q4=19-to date
- Set up distributorship agreement with local private pump company with bases in Estevan (Sk) and Wabasca (Man) to service those areas
- USA, new longer term agreement being negotiated
- Purchased Consulting company which added depth to engineering and capital markets with the addition of Al Stark and Rick McHardy to the board



- **Continue to support and build Canadian market and the USA**
- **International market on hold as we focus on NAM**

**Continue to Develop strategic sales initiatives utilizing:**

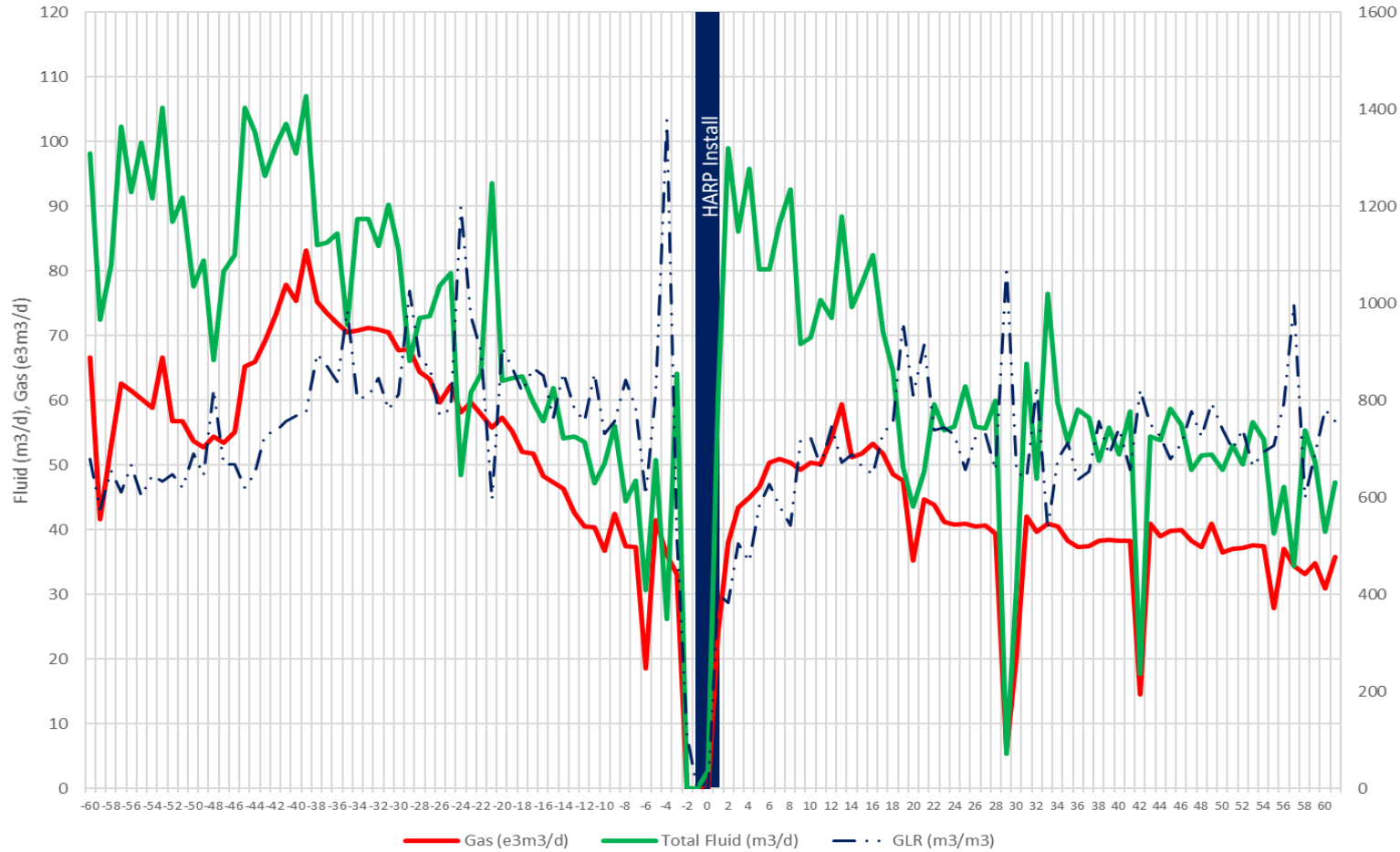
- Referral's
- Geographic areas where we are experiencing best results and leverage those into new operators in the same area
- Choose target accounts based on customer preferences and willingness for early adoption of technology- cost of installations are higher
- Lunch & Learns, field seminars , targeted operator seminars
- Continue building brand through strategic shows, advertising on results achieved, social media etc.

**Commercialize REAL In Canada and enter the USA market**

**Actively pursue strategic partners /alternatives to deploy commercialize HART**



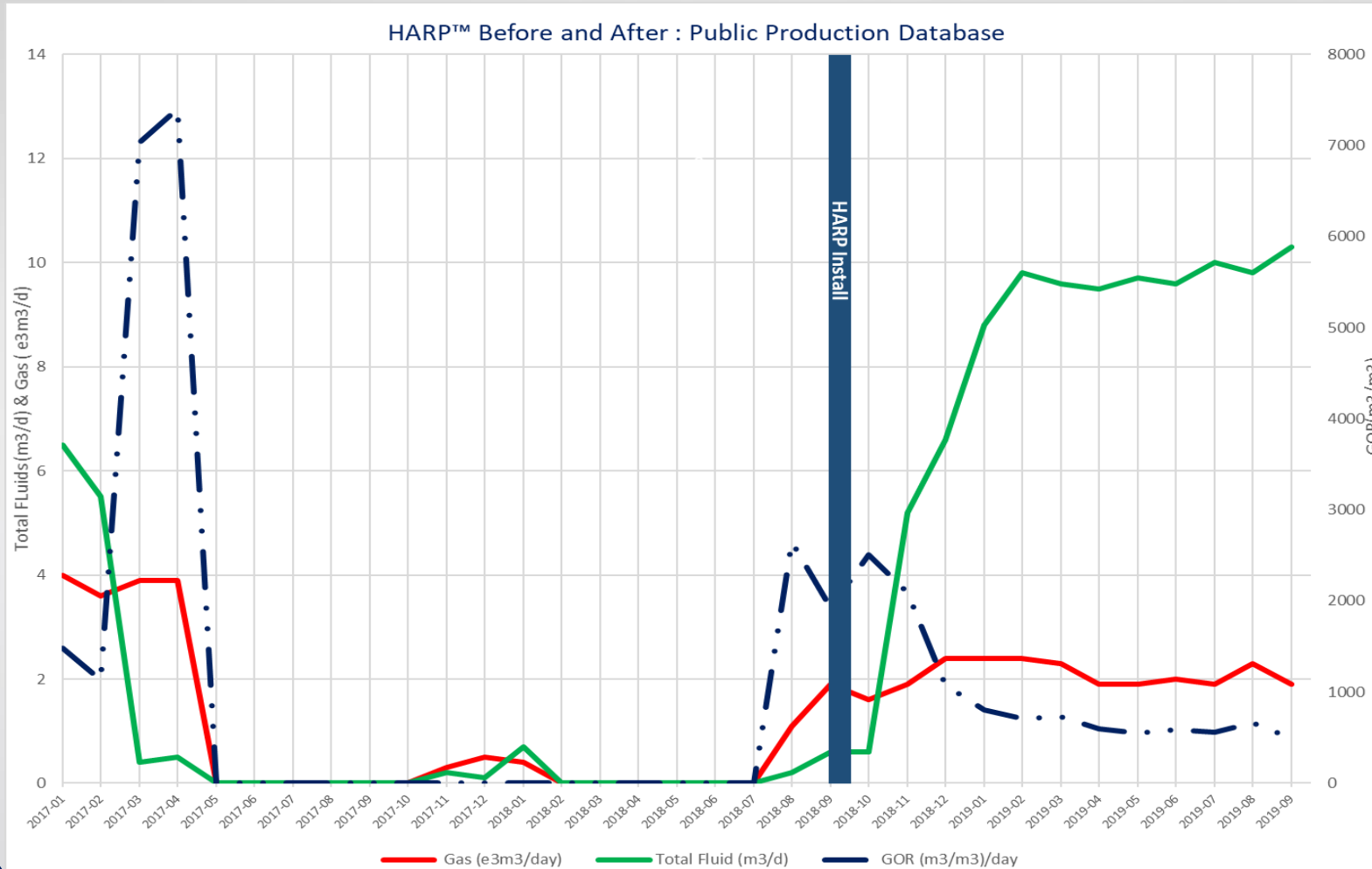
HARP™ Before and After : Days of Production



Utilizing HARP™ has:

- Increased oil production
- Improved operational runtime
- Eliminated gas locking
- Reduced operating costs

The well continues to operate as of the publication date.

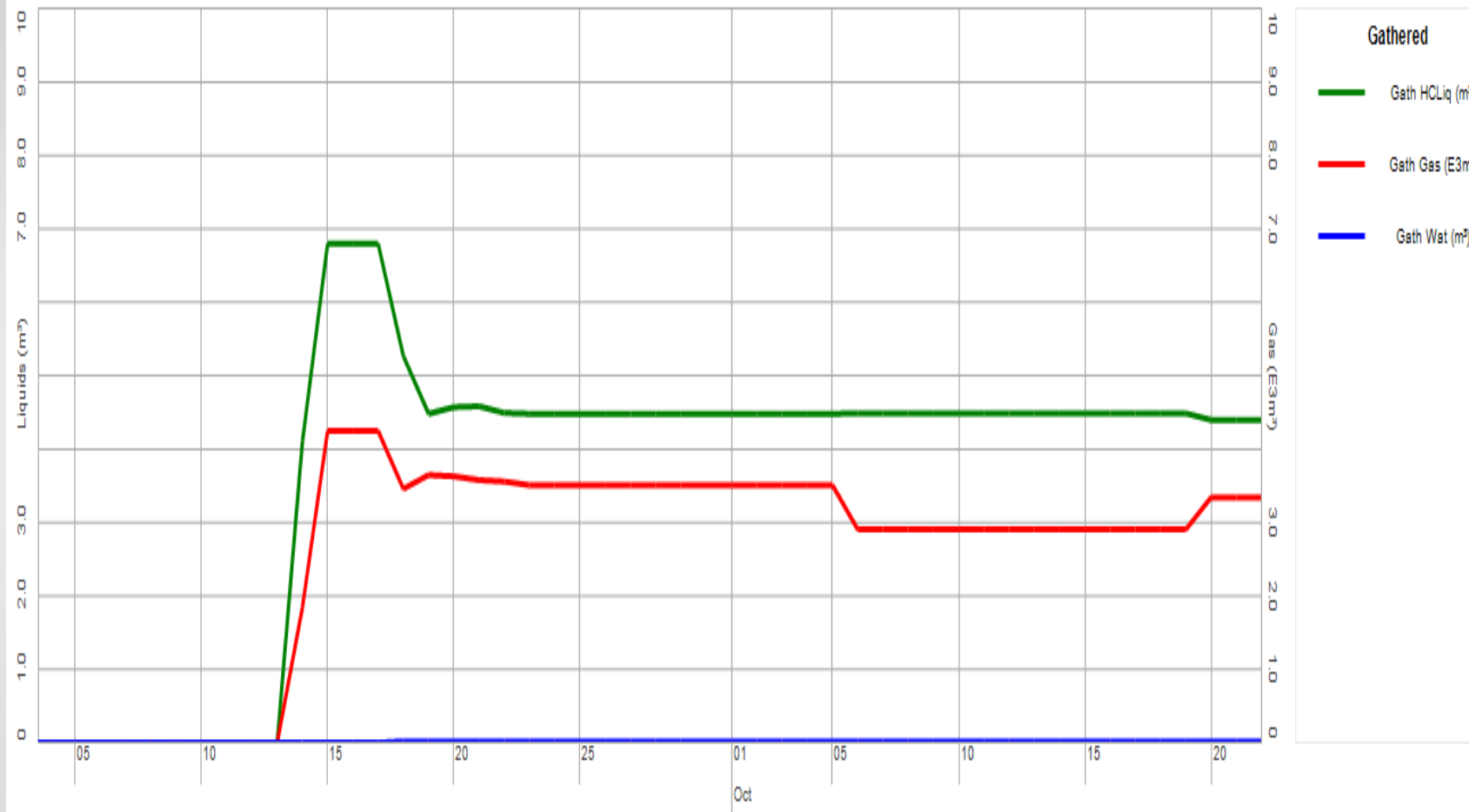


Utilizing HARP™ has:

- Increased oil production
- Improved operational runtime
- Eliminated gas locking
- Reduced operating costs

The well continues to operate as of the publication date.

# Cardium well Re-activated



Utilizing HARP™ has:

- Increased oil production by 80%
- Increased gas production by 22%
- Eliminated gas locking of conventional pumps
- Reduced operating costs

The well continues to operate as of the publication date.

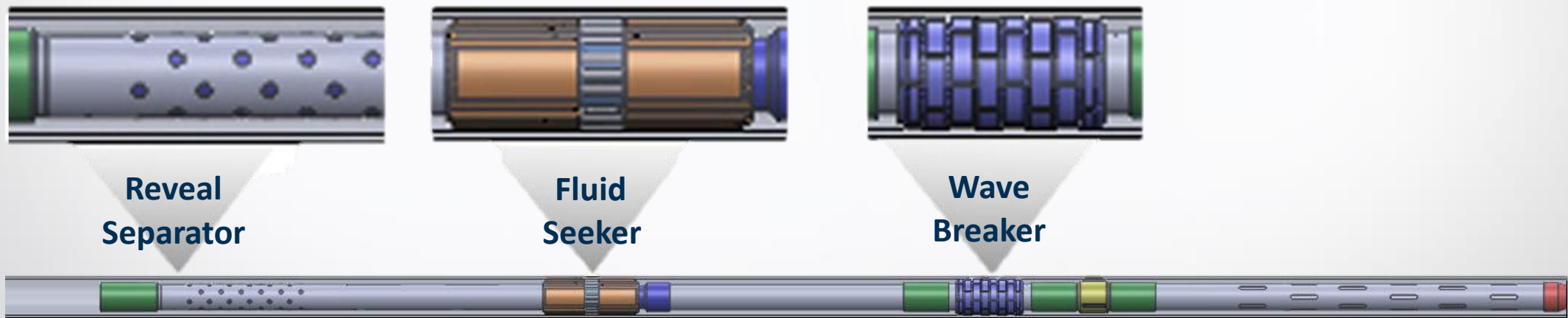
- Raise Production is a technologically driven, publicly listed Oil & Gas Service Company (TSX Venture – Symbol: RPC) headquartered in Calgary, Alberta

<b>Basic Shares Outstanding</b>	<b>113.6M</b>
Fully Diluted Shares	116.6M
Current Share Price	\$0.165 (52 Week High: \$0.20/Low: \$.05)
Current Market Capitalization	\$18.7M
Insider Ownership	24.5%
Largest Shareholder (Endurance Lift Solutions)	12.8%
Cash Position (as of Sept 30/19)	\$1.5M
Convertible Debentures	\$2.3M

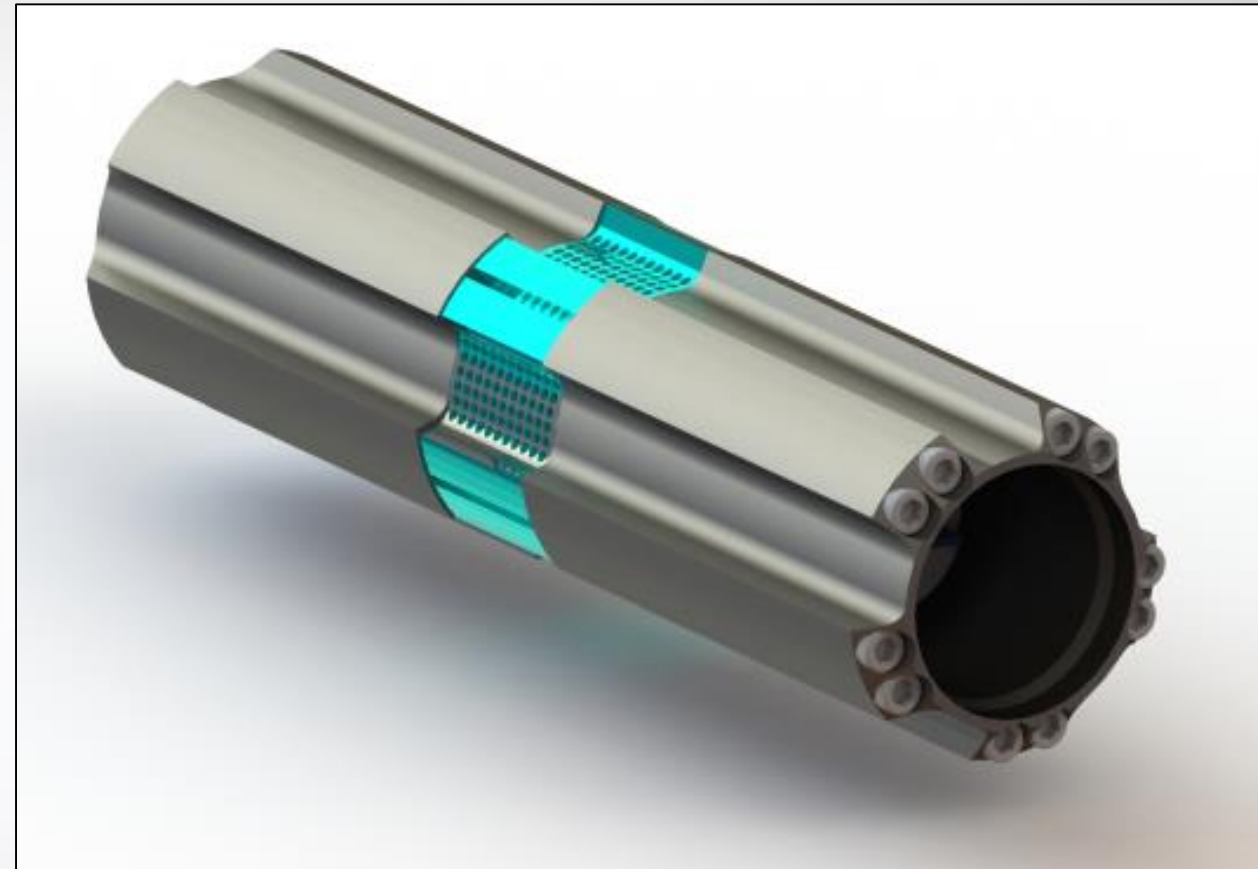


# Engineering

- Evolutionary information presented here was derived from the lessons learned in a downhole test well
- The test well environment confirmed:
  - REAL™ system provided more stable pump fillage and system efficiency
  - Well consistently carried higher fluid levels, with high foam concentration
  - Theorized that equilibrium with fluid level lead to gas path of least resistance toward the pump
  - 30% of the free gas was entering the pump intake
- Inference was additional system retention time may be necessary



- Well environment informed an evolution to the lab test well model
- Test model changes summarized:
  - Simulated 3-phase fluid added to the system
  - Length added with additional retention time in mind
  - Various configurations tested in a progressive fashion
  - Same inclination settings with each test iteration



- The updated configuration:
  - Informed by field testing and lab model simulation
  - Improved submergence and stability thereof
  - Additional length and retention time
  - Pump interface updated

**Thank You**  
—— *For your time* ——

**RAISE PRODUCTION**  
THE COMPLETE SOLUTION

